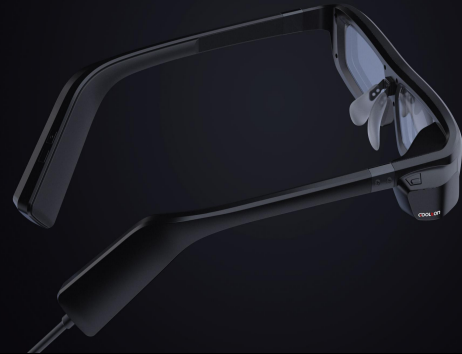


**G200-E**

**Appearance and performance**

Appearance and performance	Monocular display, split structure, glasses part is separated from signal processing unit.
Shell material	Aerospace Grade Materials
Weight	114g
Connection method	Wired connection

**Hardware**

Resolution	800*480
Field of view and lens thickness	FOV 25°, lens thickness 2mm
The diagonal size of the effective area of the display	0.294' (inches), ratio: 15:9
Dimensions of virtual images projected by binocular waveguide smart glasses	≥45 inches (3 meters)
Average image brightness	≥1000 cd/m <sup>2</sup>
Waveguide lens transmittance	≥80%
Monocular display backlight power consumption	Typical 0.36W, range 0 - 0.6W;
Display chip total power consumption	0.12W

**Graphic capture**

Image Processing ISP	High-performance ISP
Camera	13MP Sony Sensor with AF,

**Audio capture**

Microphone	Array MIC
------------	-----------

**Phone(for signal processing)**

Mate 10 or P20 above	2.0G HZ main frequency. , 8-core 64-bit, 4000mAH battery, Type C interface, support various sensors such as GPS, gyroscope
----------------------	--

<b>Signal processing unit</b>	
Transfer Protocol	4G/5G mobile phone supporting USB3.1, Type C interface
USB interface	Type c
Audio output	Standard 3.5mm interface
Button	Physical button (switch, brightness adjustment, touchpad)